

# FlexStep





# 2-IN-1 SOLUTION STAIRCASE AND LIFT

The FlexStep stairlift is designed to function both as an ordinary staircase and as a wheelchair lift. Developed and manufactured by Liftup, the FlexStep is flexible and equally useful for pedestrians and wheelchair users alike. FlexStep is an innovative 2-in-1 solution and saves space compared to installing both a flight of stairs and a separate lift or a ramp solution.

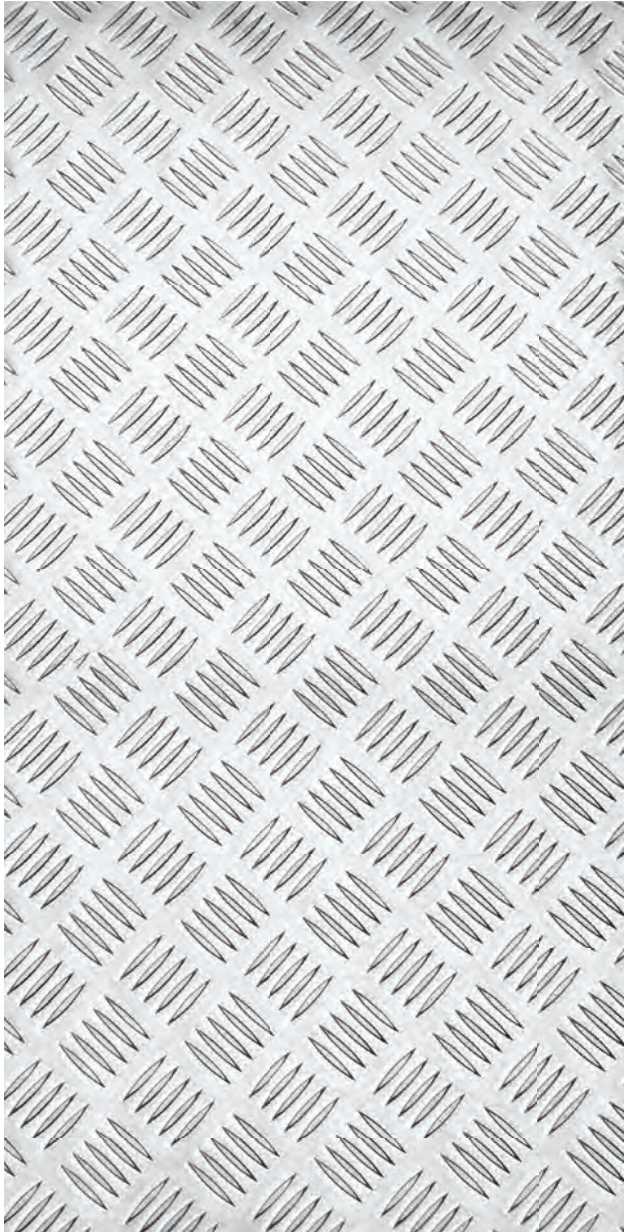
FlexStep has many configuration and installation options, making it easy to integrate your new stairlift into the existing surroundings. FlexStep is the perfect solution for both wheelchair users and pedestrians, giving easy access between levels and is particularly useful where space is tight and there would not be room to install both a lift and a flight of stairs.

In locations where space is at a premium, such as office buildings with workstations or in shops and restaurants where every square foot is dedicated to sales, the FlexStep is not just a wise financial investment but also a solution that promotes equal access for all.

**More than a technology you need  
– it's a technology you *want*.**



# Made in Denmark





## NEW NORDIC

### All the way through

#### Nordic Design

Refers to the design traditions and aesthetics of the Nordic countries of Denmark, Finland, Iceland, Norway, and Sweden. It is characterized by a focus on minimalism, functionality, and simplicity, often with a natural or muted colour palette. Materials such as wood, glass, and metal are often used, and the design often incorporates natural elements. Nordic design is known for being clean, modern, and visually appealing. It is often associated with the concept of “hygge” which refers to a sense of coziness and comfort.

#### Nordic Quality

FlexStep can be adapted individually to its surroundings for an exclusive, yet casual style, which can be integrated into most buildings – indoors as well as outdoors.



# FlexStep Case

## Pharmacy

### FlexStep and fixed staircase at Hvalsø Pharmacy

Numerous pharmacies, shops, and other public buildings encounter a common challenge when it comes to ensuring accessibility for all: the absence of a street-level entrance. Many of these buildings, while lacking ground-level access, do have enough available space to accommodate either a ramp that meets slope requirements or a versatile platform lift that can be conveniently positioned adjacent to staircases.







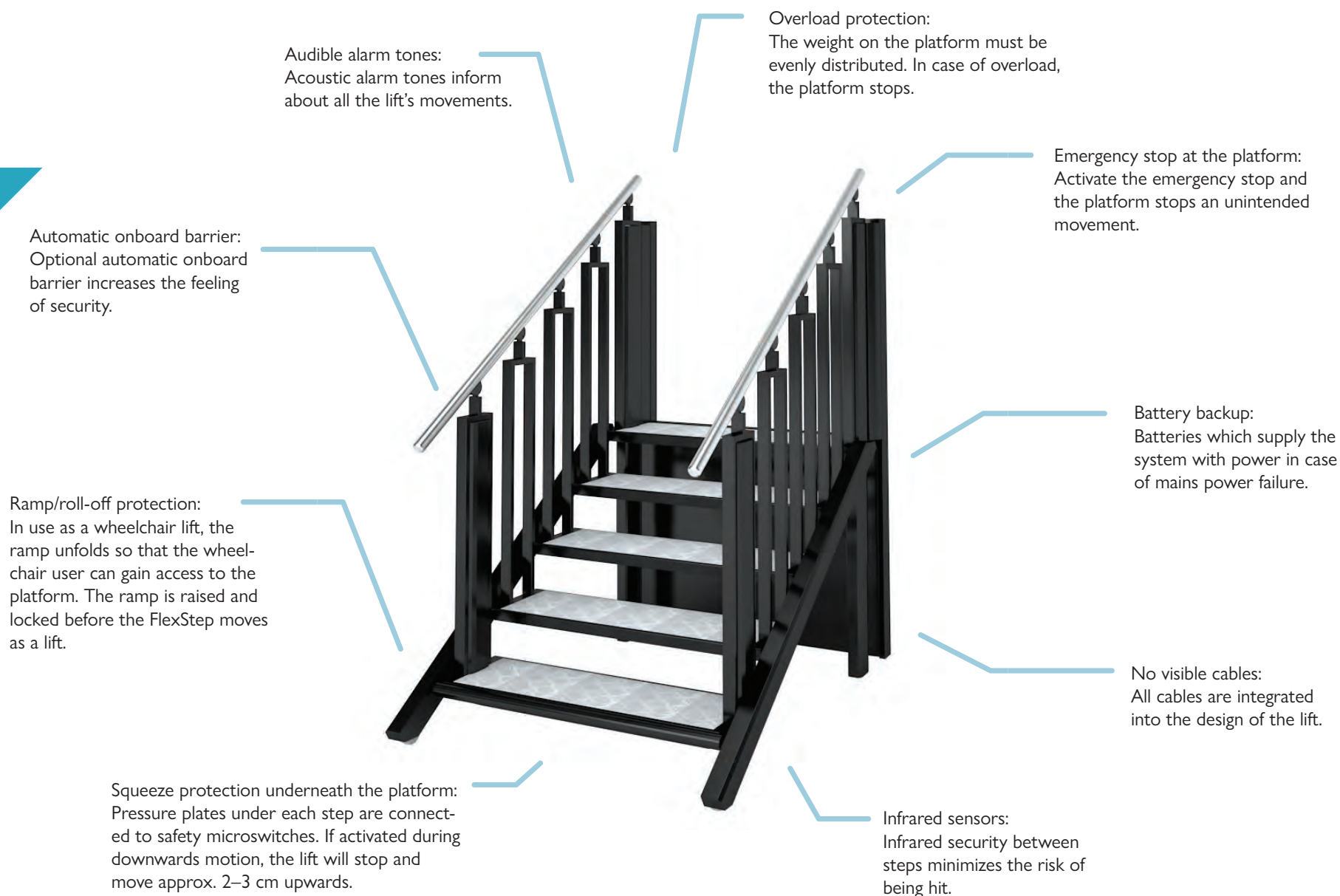
The challenge often lies in the fact that many accessibility solutions can compromise the architectural integrity of a building, and most property owners are keen to maintain the aesthetic appeal of their structures while meeting accessibility standards. A successful example can be found at Hvalsø Pharmacy in Denmark, where they elegantly addressed this challenge by installing a FlexStep alongside a fixed staircase. This clever integration ensures that the presence of a platform lift for wheelchair users and pedestrians is seamlessly concealed, preserving the building's visual harmony.



- 1 Call station mounted on a column
- 2 Matching railings
- 3 Same floorboards in FlexStep as on landing
- 4 Vertical barrier
- 5 Fixed staircase

“The alternative solution was to build a ramp. It would be much cheaper, but it would also be ugly. Above all, there would be no respect for the 150-year-old pharmacy building and I do not want to ruin the beautiful architecture.”

# Comfort and Safety







## UNIQUE BENEFITS

- 2-in-1 solution: staircase and lift
- Indoor and outdoor use
- Numerous design options
- Easy to integrate in both new and existing buildings
- Plug-and-play installation
- Integrated machinery

# FlexStep Case

## Medical Clinic

### FlexStep in a medical clinic in Copenhagen

Situated in the vibrant city of Copenhagen, this cozy family practice harmoniously blends in with its environment, surrounded by the bustling harbour, lively water activities, and contemporary construction. Within this modern medical clinic adorned with a minimalist and sophisticated interior design, Liftup's FlexStep takes centre stage. The installation of the 6-step FlexStep guarantees complete accessibility and seamlessly bridges the two levels of the facility.





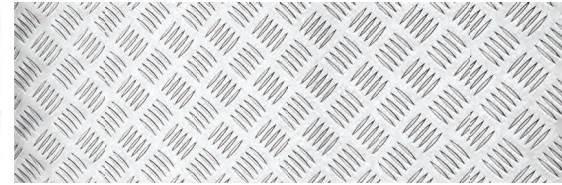
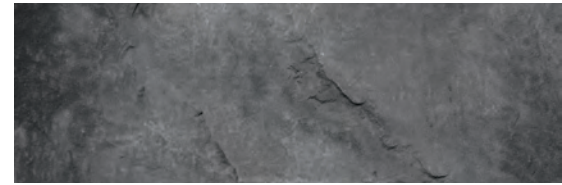
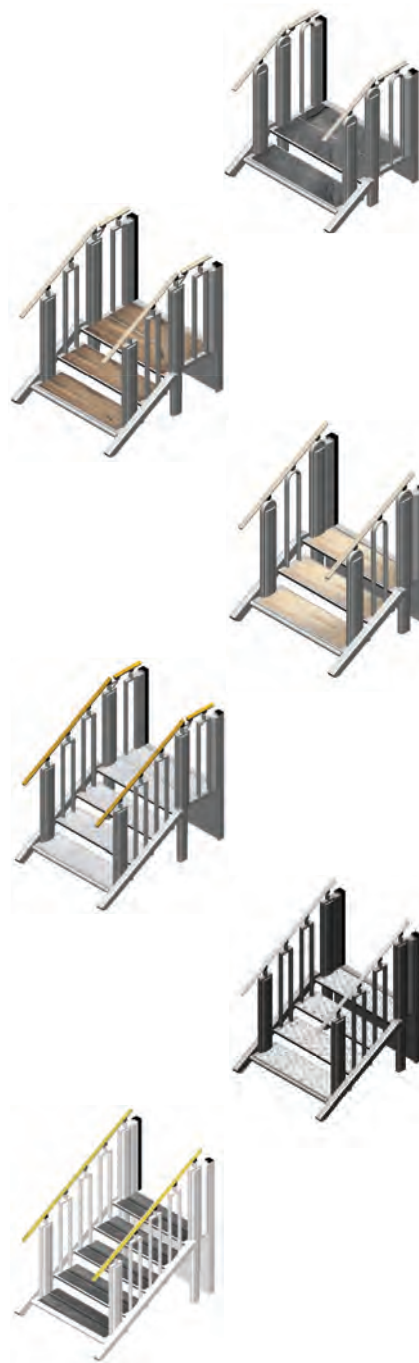


The white staircase with steps covered with the same wood cladding as the rest of the floor makes the solution appear light and elegant. The FlexStep functions both as an ordinary staircase and as a wheelchair lift, so ensuring people with walking difficulties and wheelchair users to get around safely, even though the clinic has several levels.



- ① Step material matches the rest of the flooring
- ② Electronic and integrated control system
- ③ Painted in RAL colour white to match the decor
- ④ Solves lack of space
- ⑤ Light in control panel

“I chose FlexStep because it saves space, as it functions both as an ordinary staircase and as a wheelchair lift, and I like the design and solution.”



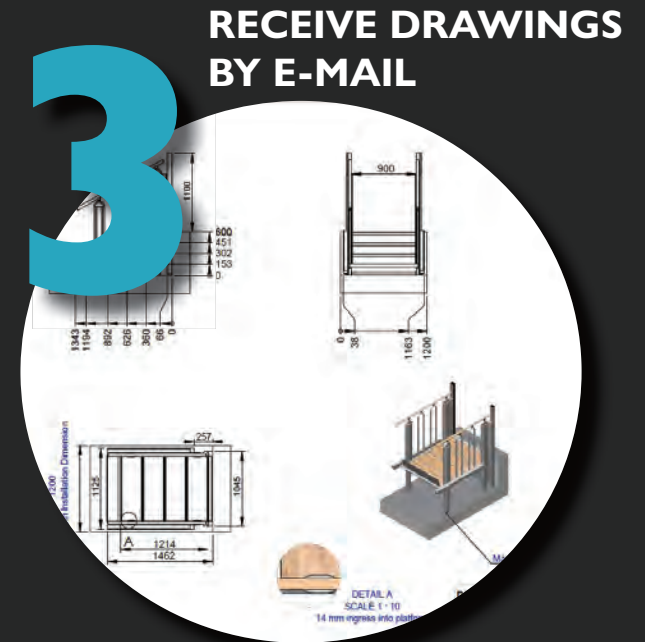
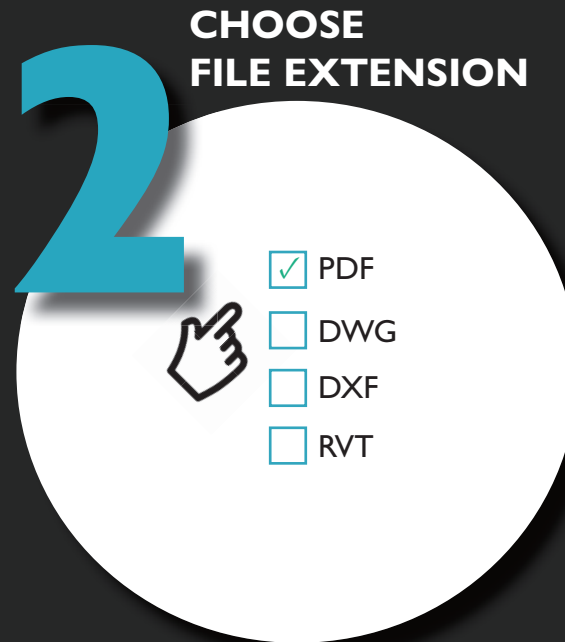
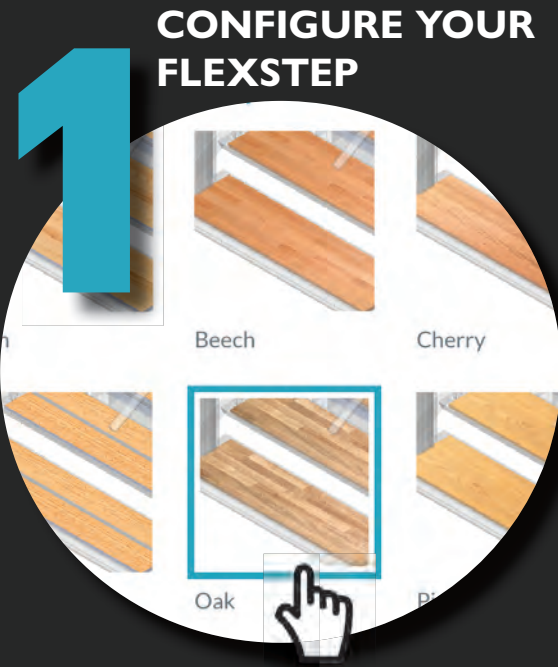


# A wide range of possibilities

- The lift has 2 to 6 steps and if the platform is too small for a wheelchair, the top step is extended.
- For the perfect overall look, any RAL colour can be individually selected on request. (Standard: Grey Gris 900 Sable)
- For the perfect well-integrated look, fit your own matching floorboards on steps. (Standard: Ash, beech, cherry, pine, walnut, aluminium checker plate, non-skid linoleum, mahogany, mahogany plank, oak, oak plank)
- Treatment: Oil, varnish, or plain.
- For the perfect design coherence with the handrails of the stairs, any RAL colour of the onboard handrails can be individually selected on request. (Standard: ash, beech, cherry, mahogany, oak, pine, walnut, flat/round handbar with stainless steel, flat/round metal painted, round brass)
- Matching railings and staircase. (EN 1090 compliant)
- One- or two-way (external) call stations – wired/wireless – for wall mounting or free-standing column.
- Onboard alarm system.
- Choose square or round balusters for the perfect meticulous integration.
- Configure the lift with a door, vertical barrier, and/or the automatic onboard barrier.
- New reversible door allows onsite choice of left- or right-hand side opening.
- Fold-up ramp for maximum roll-off/down protection.
- Delivered ready for plug-and-play installation or disassembled for easy transport when space is tight.
- On/off key lock option to avoid accidents in e.g. public places.

# LPC - 3 SIMPLE STEPS

## PRODUCT CONFIGURATOR



Design your own FlexStep in Liftup's Product Configurator LPC and receive the drawing in PDF, dwg, dxf or rvt format by e-mail within a matter of seconds. On LPC there are three different levels:

- Guests
- Professionals
- Dealers

**TRY HERE**



Contact Liftup for advanced access.



# FLEXSTEP SPECIFICATIONS

Model: .....	FlexStep V2
Lifting capacity: .....	400 kg/2 pers.
Internal dimensions: .....	W 700/800/900/1000 mm - L 900 mm - 1800 mm.
External dimensions: .....	W 930 – 1230 mm - L 1095 - 2010 mm.
Lifting speed: .....	40 mm/sec.
Step widths: .....	700/800/900/1000 mm.
Step model: .....	8 versions: 2–6 steps
Lifting height: .....	240 mm - 1250 mm.
Duty cycle: .....	2 min. operation every 5 min.
Weight: .....	125-205 kg.
Power supply: .....	110–240 V/50 Hz (1.1 A) Max: 90 W, standby < 6 W
Approval: .....	CE marking 2006/42/EC (Machinery Directive)

## ISO certification

Liftup is ISO-certified according to the quality management standard ISO 9001. The certificate has been achieved by agreeing to continuously and periodically being evaluated by a third-party assessment body reviewing and auditing the organization to assure the quality processes are being followed. It is your assurance that we consistently deliver quality products and services that meet your needs and expectations, as well as the legal requirements applicable at all times.

## Utilized standard

FlexStep has been developed utilizing relevant requirements according to ISO 9386-1:2000.

## FlexStep V2 Product Certificates

The Danish Technological Institute, Certification & Inspection hereby certifies that the FlexStep V2 was functionally tested on 22nd January 2018 in Støvring. The technical documentation was reviewed and the FlexStep V2 was found to meet the requirements relating to it in the Machinery Directive 2006/42/EC, as well as the Danish Labour Inspectorate's Executive Order No. 693 of 10 June 2013 on the arrangement of technical aids.



# lifting people

We want to change the way people think about access products: More than a technology you need – it's a technology you want. We design thoughtful, holistic and aesthetic access solutions where every element adds to improve the total user experience. We create unique tailormade solutions where our products help people and are fully and beautifully integrated in the architectural environment. This means that our access solutions also have an emotionally uplifting and satisfying impact – because they are comfortable, user-friendly, and well-designed. This also means that we can transform access enablers from being tools that solves a task for the few – to being smart and pleasurable design elements for everyone to enjoy.

