



# Leonardo

A new level of **comfort.**

ELECTRIC TRACTION LIFT



# Leonardo



## Silent, affordable, safe.

Leonardo is a latest-generation electric homelift. Low consumption, maximum comfort and a wide range of customisation options. It's equipped with a dual emergency system, electric and manual.







## Beauty and technology, together.

Leonardo is synonymous with innovative **technology** aimed at **saving energy**, ensuring economy of operation while respecting the environment. Leonardo is Metalift's signature product, **extreme silence** meets **Italian design** recognised worldwide.



LOW CONSUMPTION



M MULTIPLE FINISHES



ELECTRIC TRACTION



I REDUCED SIZE



QUICK INSTALLATION



HIGH PERFORMANCE



SILENT AND VIBRATION-FREE

Designed to operate at low power consumption. Among the first in this sector to be awarded a better energy efficiency rating than Class A classification according to the measurements provided by the VDI 4707 guidelines.



Thanks to the connections with Google Home / Alexa or other similar devices you can use voice commands.



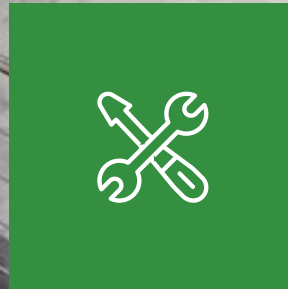


## Suitable for indoor and outdoor use.

The outdoor structures are anti-seismic and weatherproofed to stand up to the elements over time.

Full range of colours and finishes to blend with any environment.





## Maximum savings.

Leonardo is an electric homelift with extremely low energy consumption.

## Absolute safety with a dual evacuation system.

In addition to the blackout protection system, homelift **Leonardo stands out from the competition** because in the event of malfunctions it is also equipped with a simple, immediate **manual** evacuation system that makes the homelift safer for the whole family.



Electric homelift with dual electrical and manual evacuation system.





## Completely customisable.

Not just practical and technologically advanced, they are also extremely customisable, made to measure for your spaces to meet every need.

The wide range of colours, finishes and materials, together with the vast range of accessories, make it possible to design interiors in styles that run from classic to hi-tech. Functionality and beauty become one.

### Modello Modena.

Composed of:  
self-supporting plastic-coated sheet metal, corners, ceiling frame, handrail and push-button panel in satin-finish stainless steel, mirror, rubber flooring, display and spotlight lighting.

### Modello Modena Advanced.

Composed of:  
reinforced self-supporting plastic-coated sheet metal, oversized corners, skirting, handrail and slim panel in satin-finish stainless steel, mirror, rubber flooring, stainless steel display and flat ceiling with 4 spotlights, plastic-coated sheet metal roof frame.





## Smooth moves.

The homelift ride comfort is absolute. Operation is smooth and vibration-free.



## Innovation is green.

Leonardo stands out for its innovative technology aimed at saving energy, ensuring economy of operation while respecting the environment.



## Extremely quiet.

Made with the latest technology, it guarantees silent performance.

## Certified quality.







## Customisation



The up to date range of accessories and finishes is available on our website [www.metalift.it/accessori](http://www.metalift.it/accessori)



### CABIN LOP PANEL



Venice Venice touch Aida Inox slab

### AUTOMATIC DOORS



Metal Full glass Glass & Metal

### FLOORS LOP PLATES

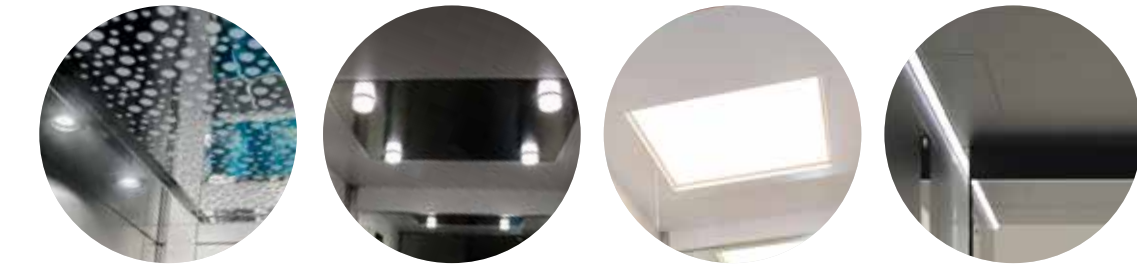


Aida display Venice black Venice white display TFT 4.3 Soft display Soft key

### MANUAL DOORS



Steel glass Alluminium glass Standard Full glass



Planet Polished stainless steel with BOGO spotlights Led panel 60x60 Led bars

### LANDING DOOR HANDLES

### CABIN HANDRAIL



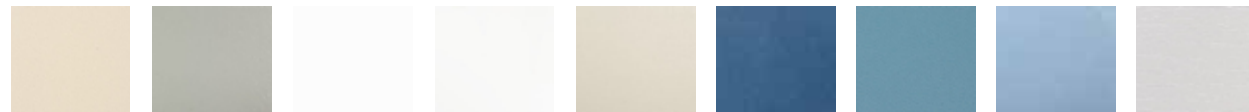
M2 Standard Standard inox Flat inox



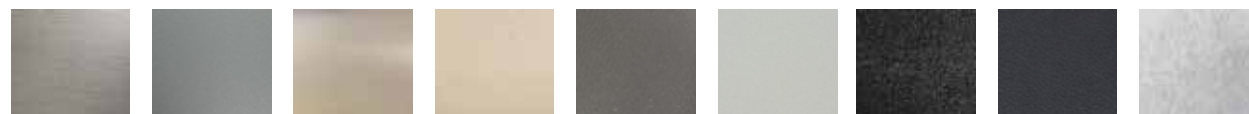


## Materials and colours for cabin interiors.

### Skinplate



A13    A19SMA    A32PP    A49PP    A90GTA    B1    B13    B32SMA    DL81-E

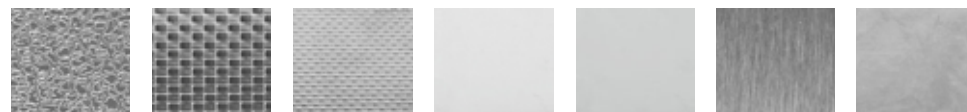


F12PPS    F2SMA    F42PPS    G1    M12    N1    N3    N4    PPS10



PPS12    PPS15    PPS17    R10    R8SME    V14

### Stainless Steel



Leather    Inox dama    Linen    7 Mirror    Dright BA    Brushed    Scotch bright

### Plastic Laminate



Abet 1379    Abet 1678    Abet 1902    Abet 358    Abet 421    Abet 472    Abet 475    Abet 658

## Cabin floors materials and colours.

Images referring to customised solutions created specifically on request and not binding for the manufacturer.

### Linoleum e PVC



Linoleum 2939 – L005    Linoleum 3055 – L002    Linoleum 3123    Linoleum 3866 – L001    Linoleum 3874    Linoleum L003    Linoleum L004    PVC 10232    PVC 10482



PVC 12802    PVC 3122    PVC Black dotted rubber    PVC Grey dotted rubber    PVC Step Blue    PVC Step Light grey    PVC Step Medium grey    PVC Step Dark grey    PVC Step Black

### Granit



Granit 2402 Grey dove tail    Granit 607 Polar ice    Granit 671 Black star

## Doors and structures colours.



RAL 1013    RAL 7035    RAL 9010    RAL 9005    RAL 9010    RAL 7016    RAL 7001    Stardust black    Musk brown



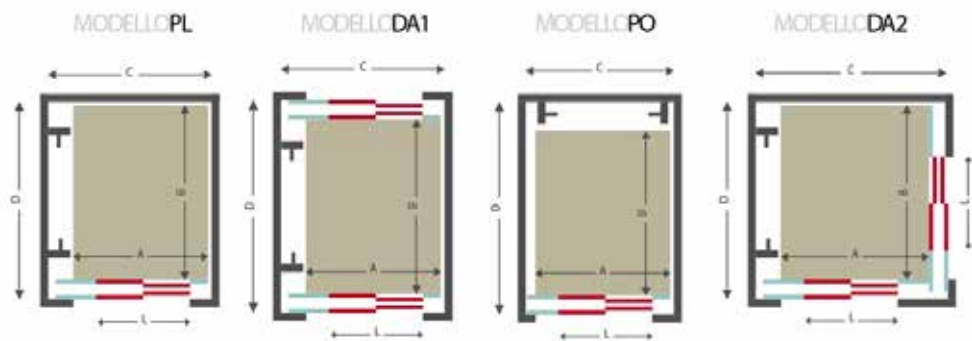


## Characteristics

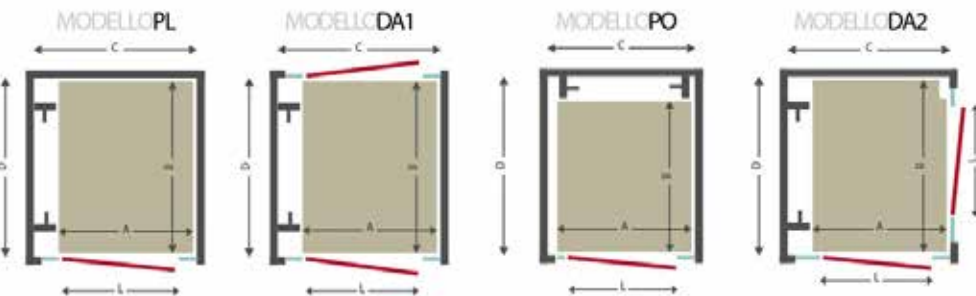
|           |   |
|-----------|---|
| Capacity  | 400 kg max  |
| Speed     | 0,15 m/sec (0,3 m/sec NO CE)  |
| Pit       | 200 mm automatic door (130 mm optional)   |
| Overhead  | Min 2500 mm – 2700 mm automatic door  |
| Travel    | 24 mt   |
| Operation | Hold on press in cabin and one touch from landings - Automatic with cabin doors |
| Supply    | 230 Volt monophase 50 Hz  |
| Power     | 0,5 Kw ( max 0,95 Kw)   |
| Emergency | Electric and Manual   |

## Technical drawings.

Contact the technical department for customized projects.



| AUTOMATIC | A    | B    | L   | C    | D    |
|-----------|------|------|-----|------|------|
| PL        | 900  | 1300 | 800 | 1400 | 1570 |
| PL        | 1100 | 1400 | 900 | 1550 | 1670 |
| DA1       | 900  | 1300 | 800 | 1400 | 1700 |
| DA1       | 1100 | 1400 | 900 | 1550 | 1800 |
| DA2       | 1100 | 1400 | 900 | 1780 | 1770 |
| DA2       | 1200 | 1200 | 800 | 1740 | 1570 |
| PO        | 1400 | 1100 | 900 | 1650 | 1640 |



| MANUAL | A    | B    | L   | C    | D    |
|--------|------|------|-----|------|------|
| PL     | 800  | 1200 | 800 | 1210 | 1300 |
| PL     | 900  | 1300 | 900 | 1310 | 1400 |
| PL     | 1100 | 1400 | 900 | 1500 | 1500 |
| PO     | 1000 | 1200 | 900 | 1200 | 1530 |
| DA1    | 800  | 1200 | 800 | 1210 | 1240 |
| DA1    | 900  | 1300 | 900 | 1310 | 1340 |
| DA1    | 1100 | 1400 | 900 | 1500 | 1440 |
| DA2    | 1200 | 1200 | 900 | 1530 | 1300 |









T J Lift Solutions Ltd.  
Unit 11 Hulme Court,  
Commercial Road,  
Darwen, Lancashire. BB3 0FE

Office : 01254 775187  
Email : [enquiries@liftsolutions.co.uk](mailto:enquiries@liftsolutions.co.uk)  
Web : [www.liftsolutions.co.uk](http://www.liftsolutions.co.uk)

**leonardo**